



OFFSHORE CAPABILITIES



www.geohidra.com





Geotechnical exploration & engineering

With over 35 years of geotechnical experience, Geohidra offers a complete package combining our modern fleet of vessel, state-of-the-art technology, complete laboratories and highly qualified engineers.

Our headquarters, strategically located in Venezuela, allow us to quickly and cost-effectively mobilize assets and personnel to any location in Latin America and the Caribbean, while adding the necessary local knowledge



We can perform the following **geotechnical studies** in very shallow waters thanks to our Jack-up barges, and **up to 200m of water** with the MV Geoplorer:

We specialize in performing **geotechnical engineering** for:

- ✓ Oil & Gas platforms
- ✓ Submarine pipelines
- ✓ Jack-up rig legs stability
- ✓ Geohazards
- ✓ Bridges
- ✓ Harbors



- ✓ Wireline CPT
- ✓ Wireline Sampling
- ✓ Rock coring
- ✓ Seabed CPT
- ✓ Hammer sampling
- ✓ Jumbo piston coring
- ✓ Vibrocoring
- ✓ SPT (jack-ups)
- ✓ Seismic cone
- ✓ PS logging



www.geohidra.com





MV Geoexplorer

The Goexplorer is a 4 point mooring geophysical and geotechnical vessel, capable of drilling in water depths up to 200m.

A full refit in 2014, along with state of the art drilling and sampling equipment installation, make the Geoexplorer an extremely effective and reliable asset.

Its relatively small size and low operational cost allow this vessel to be remarkably cost efficient.



Features

- 350m borehole drilling combined depth
- 3m heave compensation
- Downhole sampling/ CPT
- Seabed CPT
- Piston Coring
- Vibrocoring
- Geophysical surveys
- Oceanographic surveys
- PS logging
- Geotechnical Laboratory



Garza Jack-up

Specifications

Monohull
 Self-propelled
 17 Berths
 24m Max. water depth
 190 sqm deck space
 50 Ton. Max. deck load

Applications

SPT
 CPT
 Sampling
 Pile driving
 Dredging

Celta Jack-up

Specifications

Modular construction allows quick
 and cost-efficient transportation
 20m Max. water depth
 140 sqm deck space
 50 Ton. Max. deck load

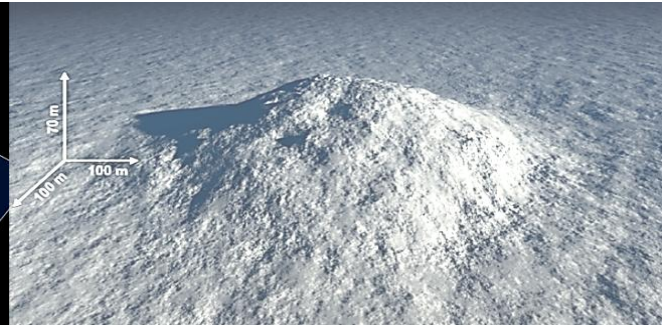
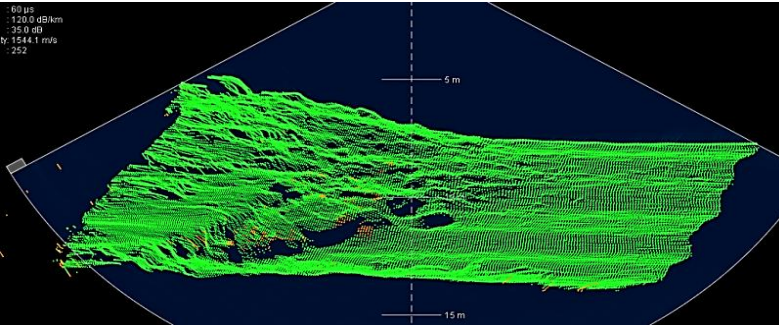
Applications

SPT
 CPT
 Sampling
 Pile driving
 Dredging



Land Rigs

We own 12 portable drilling rigs that
 can be used on our jack-ups

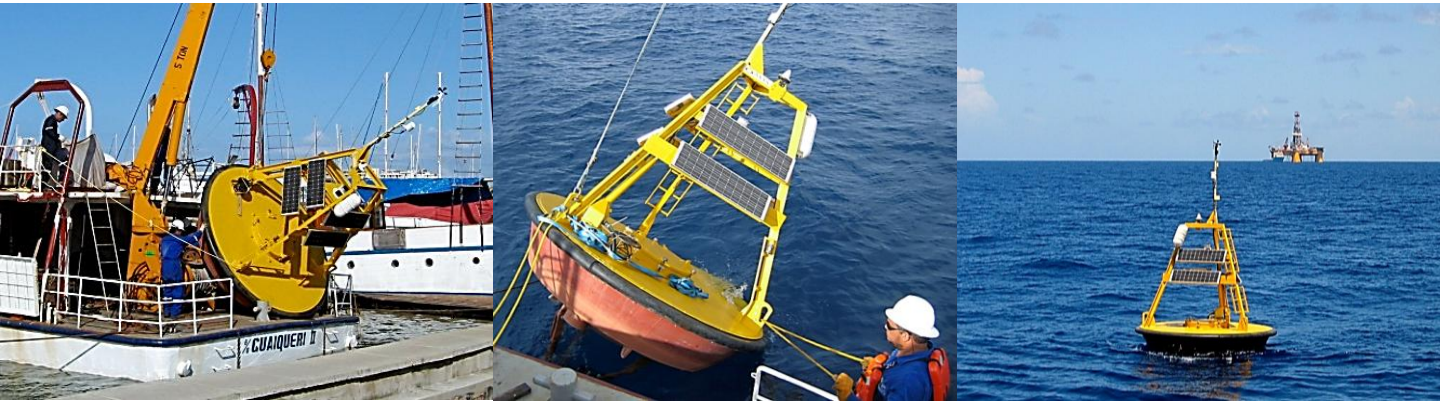


High resolution geophysics

- Bathymetry
- Shallow Hazards assessments
- Integrated geophysical-geotechnical characterization

Equipment

- ✓ Side scan sonar
- ✓ Magnetometer
- ✓ Sub-bottom profiler (Pinger) (2-16 kHz)
- ✓ Sparker (.5-1.5 kHz)
- ✓ 2D High resolution digital seismic (50-200 Hz)



Oceanography

Data acquisition systems (Buoys) design, integration and deployment.

Meteorological Oceanographical data processing and interpretation

Laboratories

Our advanced laboratories combine world class equipment and experienced professionals

Capabilities

- Classification tests
- Triaxial (UU, CIU, CKoU) (ASTM 2850, 4767)
- Constant Rate of Strain (ASTM 4186)
- Incremental Consolidation (ASTM 2435)
- Direct Simple Shear (ASTM 6528)
- Rock testing
- Climate controlled wet room for samples storage





Our Clients



ODEBRECHT



CORPORACION VENEZOLANA DE GUAYANA



www.geohidra.com

